



www.cticompanies.com

# Construction Services

Protecting, Enhancing, and Restoring our Environment

Creating solutions and delivering results since 1976

**CTI AND ASSOCIATES, INC. (CTI)** is a multi-disciplinary engineering and construction project-delivery firm specializing in Engineering, Environmental Compliance and Remediation. We integrate planning, analysis, engineering design, construction, and operations services to provide total project solutions that consistently meet and exceed client expectations. CTI's more than four decades of proven performance in the federal, state, municipal, and commercial market sectors is a true testament to our ability to deliver safe, reliable, and cost-competitive services, on schedule and within budget. Over the past decade, CTI has successfully executed 100's of projects for US DOE NNSA, EM, and Office of Science Sites, and for IDIQ Task Orders and project-specific contracts in support of the USACE, NAVFAC and AFCEC.

CTI's construction services include:

## CIVIL/SITE

- MassEarthwork
- Site Utilities
- Reinforced Concrete and HMA Pavements
- Site Drainage Infrastructure
- Shoreline Protection/Revetments
- RCP and CMP Culverts
- CIP and Pre-Cast Concrete Structures
- Landfill Capping (Clay and Geosynthetics)
- Land Clearing, Haul, and Access Roads

## DEACTIVATION AND DEMOLITION (D&D)

- Hazardous and Radioactive Materials Characterization
- MARSSIM Surveys
- Program Management
- Value Engineering
- Work Plan Development
- Abatement of Hazardous Materials
- Building and Infrastructure Demolition
- Waste Packaging and Disposition

## STORMWATER AND SITE IMPROVEMENTS

- Design-Build
- Site Drainage Infrastructure
- Sediment and Detention Basins
- Concrete Curbs and Sidewalks
- Concrete and Asphalt Paving
- Rain Gardens
- UST Evaluation, Removal, and Replacement
- POL Storage and Distribution Systems

## FLOOD CONTROL INFRASTRUCTURE

- Emergency Response
- Levee Construction and Rehabilitation
- Ring and Set-Back Levees
- Pump Stations
- Slope Protection and Stabilization with Rip-Rap, Gabions, Articulated Block Mats, and Geotextiles
- Gate Wells and Sluice Gates
- Cast-In-Place Headwalls Structure Demolitions/Removals
- Hydraulic Relief Wells

### Corporate Headquarters

34705 West Twelve Mile Road, Suite 230  
Farmington Hills, MI 48331

**Kevin Manuel, PE, Vice President, Construction Division**  
kmanuel@cticompanies.com

**Joey Brown, Sr. Vice President, US DOE Market Sector Lead**  
jbrown@cticompanies.com



www.cticompanies.com



# Construction Services Representative Experience

## DOE K-732 Switchyard D&D

Self-performed site characterization, D&D, environmental remediation of five acre Switchyard at ETPP. Initiated metals recycling to reduce cost, finished ahead of schedule. Recognized by DOE with exceptional CPARS and safety Award.



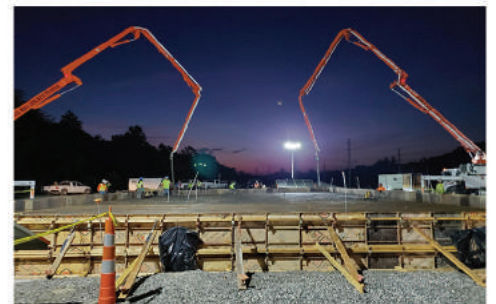
## NNSS Landfill 25 Design/Build

Designed and constructed the on-site mixed waste landfill cell currently in use for the disposition of certain DOE wastes.



## DOE Oak Ridge National Lab Pilot Plant

Construction of a Transuranic Waste Sludge Processing Facility as part of the DOE pilot program to demonstrate critical technologies.



## Representative Clients



## Office Locations

- Farmington Hills, MI (Headquarters)
- Aiken, SC
- Akron, OH
- Knoxville, TN
- Los Alamos, NM
- Idaho Falls, ID
- Oak Ridge, TN
- Sheboygan, WI

## CTI's Federal Footprint

